

LAKE OF THE DELLS NUMBER 1 AMENDMENT NO. 2

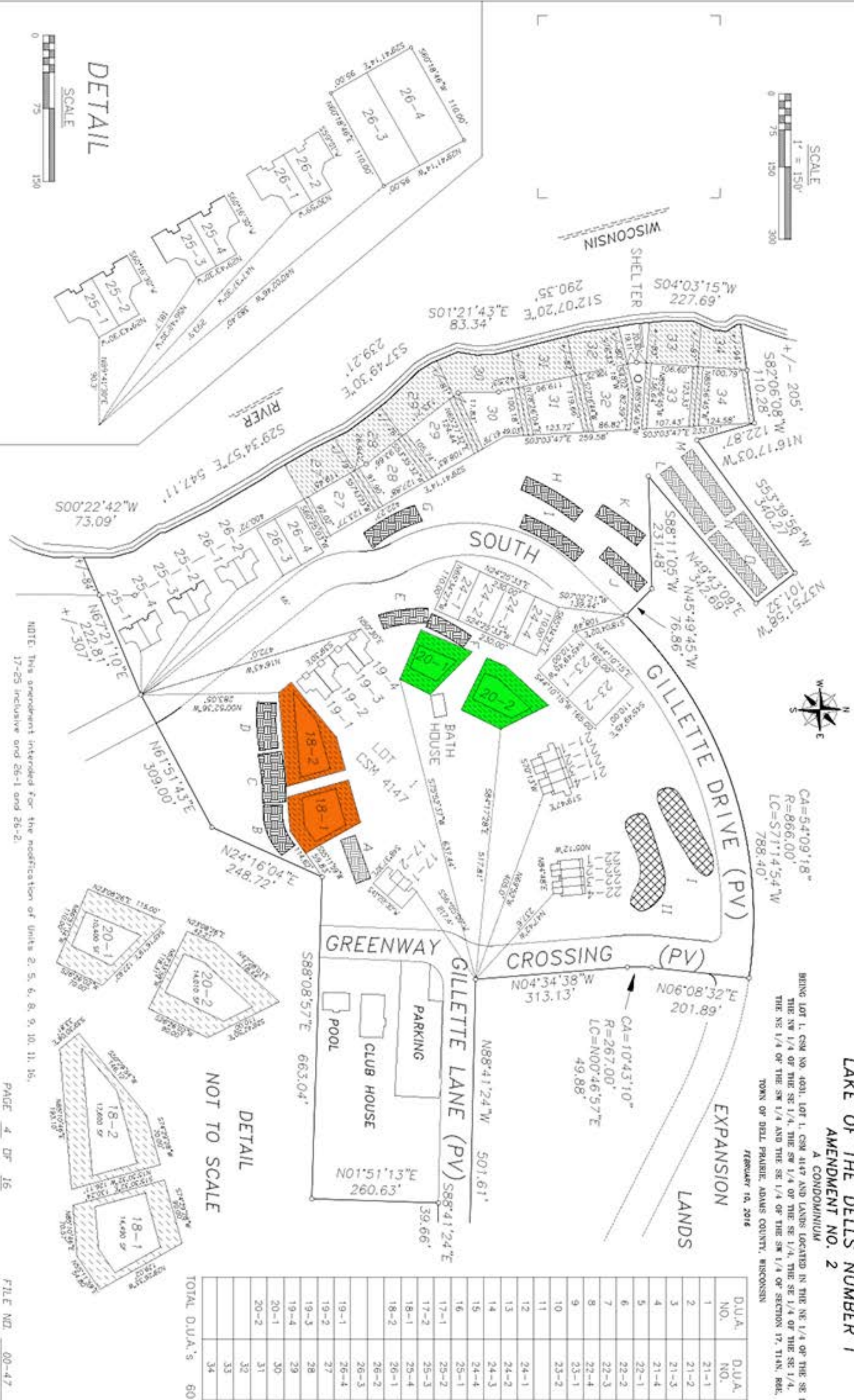
A CONDOMINIUM

BEING LOT 1, CSM NO. 4031, LOT 1, CSM 4147 AND LANDS LOCATED IN THE NE 1/4 OF THE SE 1/4, THE NW 1/4 OF THE SE 1/4, THE SW 1/4 OF THE SE 1/4, THE SE 1/4 OF THE SE 1/4, THE NE 1/4 OF THE SW 1/4 AND THE SE 1/4 OF THE SW 1/4 OF SECTION 17, T14N, R06E, TOWN OF DELL PRAIRIE, ADAMS COUNTY, WISCONSIN

FEBRUARY 10, 2016

CA=54'09'18"
R=866.00'
LC=571'14'54"W
788.40'

CA=10'43'10"
R=267.00'
LC=N00'46'57"E
49.88'



D.U.A. NO.	D.U.A. NO.
1	21-1
2	21-2
3	21-3
4	21-4
5	22-1
6	22-2
7	22-3
8	22-4
9	23-1
10	23-2
11	24-1
12	24-1
13	24-2
14	24-3
15	24-4
16	25-1
17-1	25-2
17-2	25-3
18-1	25-4
18-2	26-1
	26-2
	26-3
19-1	26-4
19-2	27
19-3	28
19-4	29
20-1	30
20-2	31
	32
	33
	34
TOTAL D.U.A.'s	60

DETAIL
NOT TO SCALE

NOTE: This amendment intended for the modification of Units 2, 5, 6, 8, 9, 10, 11, 16, 17-25 inclusive and 26-1 and 26-2.